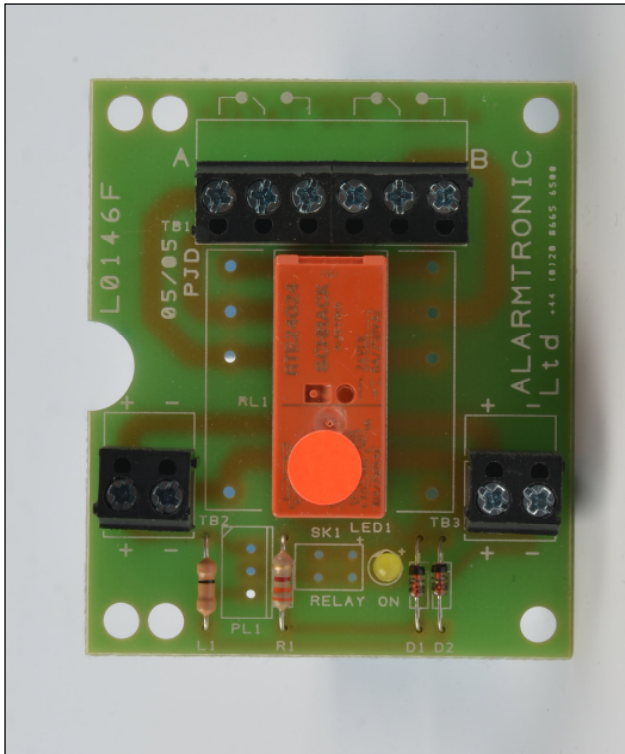


RELAY BOARD —RB1 & 2



FEATURES

- * *Polarised Coil with diode suppression*
- * *2 sets of CHO contacts*
- * *In and output coil terminals*
- * *Self adhesive feet for Board mounting*
- * *LED for relay operation*
- * *Various Coil Voltages*

GENERAL DESCRIPTION

Relay PCB complete with fixing via Self Adhesive feet . Each relay PCB has two sets of CHO contacts either rated at 5 amp or 10 amp. The coil is both polarised and diode suppressed. Coil terminals are proved for both Input and Outputs to enable inline Connections. An LED provides indication that the relay has operated .

TECHNICAL SPECIFICATION

Nominal Coil Voltage	——	24V DC or 12VDC (other coil voltages to order)
Coil Power Consumption	——	24V DC : 17mA (5 amp contacts) : 33mA (10 Amp contacts)
	——	12V DC : 33mA (5amp contacts) : 66mA (10 Amp contacts)
Contacts	——	2 sets CHO : 5 or 10 amp maximum @ 230v AC
PCB Size	——	55mm (W) x 65mm (H) x 20mm (D)

ORDER CODES DETAILS

RB1/24 - 5 Amp contacts, 24V DC coil

RB1/12 - 5 Amp contacts, 12V DC coil

RB2/24 - 10 Amp contacts, 24V DC coil

RB2/12 - 10 Amp contacts, 12V DC coil

Contacts sales for other coil voltages

ALARMTRONIC LTD

Unit 14, Meridian Centre, Vulcan Way,
Croydon, Surrey, CR0 9UG.

Tel : 01689 847626 Email : sales@alarmtronic.co.uk

Web: www.alarmtronic.co.uk